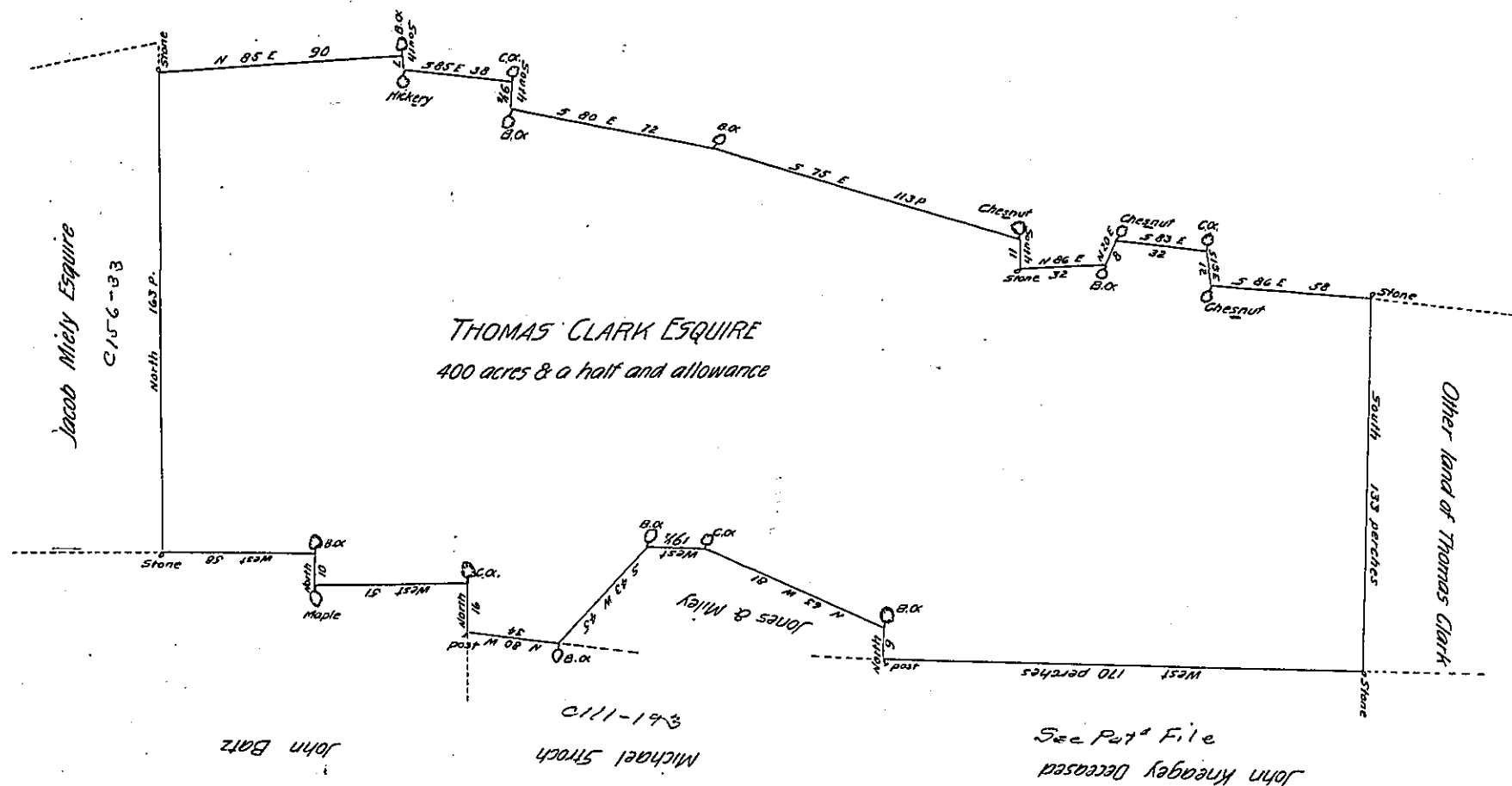


The first Bule mountain Vacant Land



By Virtue of a Warrant dated the 13th day of March 1800 Surveyed the first day of June 1800 for Thomas Clark Esquire the above described tract of land situate in Bethel Township Dauphin County Containing Four Hundred acres and a half and allowance for roads &c

Thomas Clark D. S.

To Samuel Cochran Esquire
 Surveyor General Pennsylvania

IN TESTIMONY that the above is a copy of the original remaining on file in the Department of Internal Affairs of Pennsylvania, made conformably to an Act of Assembly approved the 16th day of February, 1833, I have hereunto set my Hand and caused the Seal of said Department to be affixed at Harrisburg, this

fourth day of August 1905

Joac. P. Brown
 Secretary of Internal Affairs.